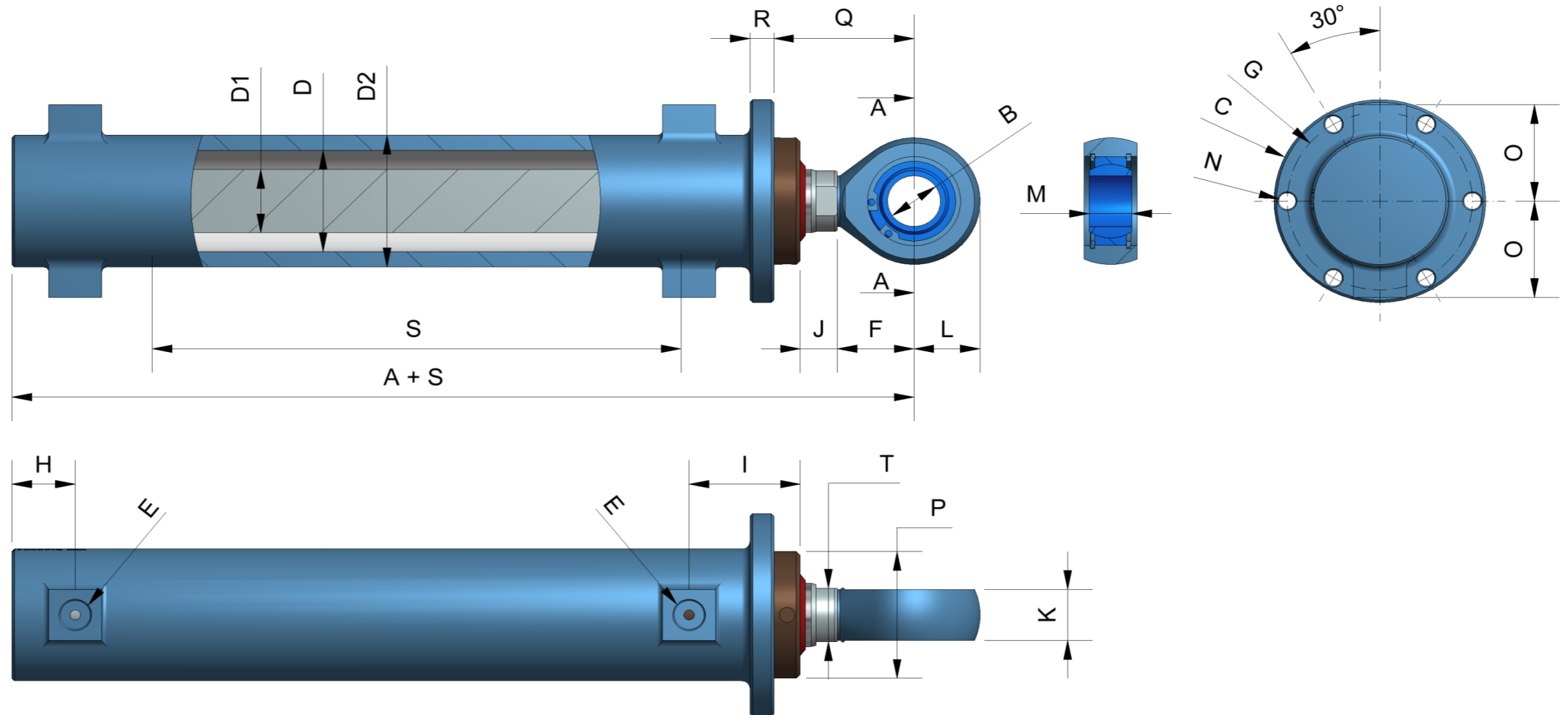
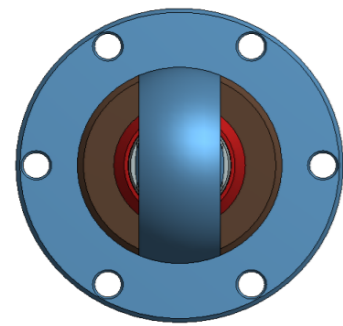


BY60FB



STAINLESS STEEL
FOR SUBSEA USE
MAX WP. 210 BAR

D	D1	D2	A	S	B	C	E	F	G	H	I	J	K	L	M	N	O	Q	R	T	P	PUSH	PULL	ART.NO.:	WEIGHT
Ø25	Ø12	Ø35	119	100	Ø10	Ø65	1/8" BSP	43	Ø52	14,5	31	11	10,5	14	14	6x Ø6,5	27,5	59	8	SW 9	Ø35	1,03 T	0,73 T	997646F-B	1,2 KG
Ø32	Ø16	Ø42	143	135	Ø15	Ø70	1/8" BSP	61	Ø60	21	28,5	11	10	20	12	6x Ø6,5	31	76	8	SW 14	Ø42	1,68 T	1,26 T	997642F-B	2,0 KG
Ø40	Ø20	Ø52	141	200	Ø20	Ø80	1/4" BSP	29	Ø70	24	42	14	20	25	16	6x Ø6,5	38	53	9	SW 17	Ø50	2,63 T	1,97 T	997637F-B	4,0 KG
Ø40	Ø25	Ø52	141	200	Ø20	Ø80	1/4" BSP	29	Ø70	24	42	14	20	25	16	6x Ø6,5	38	53	9	SW 21	Ø50	2,63 T	1,60 T	997640F-B	4,3 KG
Ø50	Ø25	Ø65	176	200	Ø25	Ø100	1/4" BSP	35	Ø85	32	50	17	24	30	20	6x Ø8,5	44,5	62	12	SW 21	Ø60	4,12 T	3,09 T	997633F-B	6,9 KG
Ø50	Ø30	Ø65	176	200	Ø25	Ø100	1/4" BSP	35	Ø85	32	50	17	24	30	20	6x Ø8,5	44,5	62	12	SW 26	Ø60	4,12 T	2,63 T	997634F-B	7,3 KG